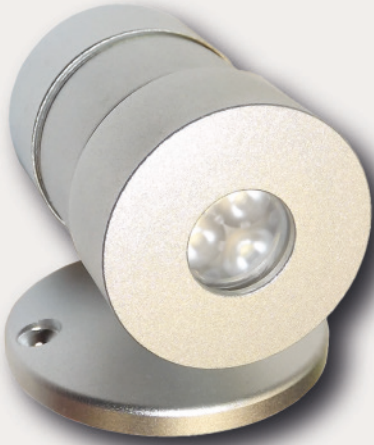


Anticorodal aluminium spotlight for indoor or outdoor installations



IT Apparecchio di illuminazione a LED in alluminio anticorodal con finitura satinato brillante per installazioni a parete o simili, sia in interni che in esterni. Grado di protezione IP55. Dimensioni massime: 56 mm x 61 mm, cavo di alimentazione di 50 cm. Disponibile in versione monoemissione con 1 o 3 Led, o in versione doppia emissione con 2 o 6 Led, modello NCS Nichia nei colori indicati in tabella. Disponibile anche nella versione RGB a monoemissione (3 led) o doppia emissione (6 led).

EN LED lighting device in anticorodal aluminium with bright satin finish for wall installations or similar, both indoors and outdoors. Protection degree IP55. Maximum dimensions: 56 mm x 61 mm, supply cable of 50 cm. Available in the single-emission version with 1 or 3 LEDs, or in the double-emission version with 2 or 6 LEDs, NCS Nichia model in the colours listed in the table. Available also in the RGB version with single emission (3 LEDs) or double emission (6 LEDs).

FR Appareil d'illumination à LED en aluminium anticorodal avec finition satinée brillante pour installations au mur ou similaires, à l'intérieur et à l'extérieur. Degré de protection IP55. Dimensions maximales : 56 mm x 61 mm, câble d'alimentation de 50 cm. Disponible en version à unique émission avec 1 ou 3 LEDs, ou en version à double émission avec 2 ou 6 LEDs, modèle NCS Nichia dans les couleurs indiquées dans la table. Disponible aussi en version RGB avec unique émission (3 LEDs) ou double émission (6 LEDs).

DE LED-Beleuchtungsgerät aus antikorodalem Aluminium mit strahlender satiniertes Vollendung für Wandinstallationen, drinnen oder außen. Schutzart IP55. Maximale Abmessungen: 56 mm x 61 mm, Versorgungskabel von 50 cm. Verfügbar in Einzelemissionsversion mit 1 oder 3 LEDs oder in Doppelemissionsversion mit 2 oder 6 LEDs, NCS Nichia-Modelle. Verfügbar in den in der Tabelle gezeigten Farben. Verfügbar auch in die RGB-Version mit Einzelemission (3 LEDs) oder Doppelemission (6 LEDs).

Article (lens 25°)	Article (lens 40°)	Article (no lens 120°)	Light source	Light colour	Wattage	Tension
25700/C	25600/C	25800/C	1 W POW-LED warm white	3000K	1W 145 lumen	12V ac/dc
25701/C	25601/C	25801/C	1 W POW-LED cold white	5700K	1W 180 lumen	12V ac/dc
25705/C	25605/C	25805/C	1 W POW-LED natural white	4000K	1W 145 lumen	12V ac/dc
25RGB/C/25	25RGB/C/40	25RGB/C/SL	3 W POW-LED RGB		3W 255 lm	7,5Vdc with driver

Article (lens 25°)	Article (lens 40°)	Article (no lens 120°)	Light source	Light colour	Wattage	Tension
25700	25600	25800	2 W POW-LED warm white	3000K	2W 290 lumen	12V ac/dc
25701	25601	25801	2 W POW-LED cold white	5700K	2W 360 lumen	12V ac/dc
25705	25605	25805	2 W POW-LED natural white	4000K	2W 290 lumen	12V ac/dc
25RGB/25	25RGB/40	25RGB/SL	6 W POW-LED RGB		6W 510 lm	7,5Vdc with driver

Article (lens 15°)	Article (lens 25°)	Article (lens 40°)	Article (no lens 120°)	Light source	Light colour	Wattage	Tension
35300/C	35700/C	35600/C	35800/C	3 W POW-LED warm white	3000K	3W 435 lumen	12Vdc Red + / Black -
35301/C	35701/C	35601/C	35801/C	3 W POW-LED cold white	5700K	3W 540 lumen	12Vdc Red + / Black -
35305/C	35705/C	35605/C	35805/C	3 W POW-LED natural white	4000K	3W 435 lumen	12Vdc Red + / Black -

Article (lens 15°)	Article (lens 25°)	Article (lens 40°)	Article (no lens 120°)	Light source	Light colour	Wattage	Tension
35300	35700	35600	35800	6 W POW-LED warm white	3000K	3W 870 lumen	12Vdc Red + / Black -
35301	35701	35601	35801	6 W POW-LED cold white	5700K	3W 1080 lumen	12Vdc Red + / Black -
35305	35705	35605	35805	6 W POW-LED natural white	4000K	3W 870 lumen	12Vdc Red + / Black -

For special versions, contact our technical office for product codes.

Power supply	Tension
LXP20/13	Ideal for the power supply from 1 to 8 of any article of the series ELY 1W, or from 1 to 4 articles of the series ELY 2W in the warm white, cold white and natural white versions
LXP35/13	Ideal for the power supply from 1 to 7 of any article of the series ELY 3W, or from 1 to 3 articles of the series ELY 6W in the warm white, cold white and natural white versions
DDL1/3	For the power supply of 1 to 10 articles of the series ELY RGB 3W, or from 1 to 5 articles of the series ELY RGB 6W

IT INSTALLAZIONE: Tracciare due punti in prossimità dei due fori della base dell'apparecchio sulla parete dove verrà installato, forare e predisporre i tasselli (non forniti nella confezione). Posizionare l'apparecchio e fissare in modo saldo e sicuro mediante due viti.

EN INSTALLATION: On the wall where it will be installed, draw two points near the base holes of the device, pierce and prepare the plugs (not included in the package). Place the device and solidly fix it with two screws.

FR INSTALLATION: Sur le mur où il sera installé, dessinez deux points près des trous à la base de l'appareil, percez et préparez les chevilles (pas inclus dans la confection). Placez et fixez solidement l'appareil avec deux vis.

DE INSTALLATION: Auf dem Wand, wo es installiert werden soll, zeichnen Sie zwei Punkte in der Nähe von den Löchern an der Basis des Geräts, bohren und bereiten Sie die (nicht im Packte enthaltenen) Einsatzstücke vor. Platzieren und fixieren Sie das Gerät mit zwei Schrauben fest.

