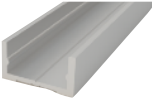
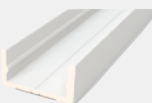
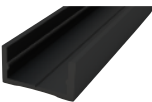

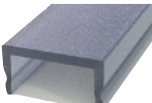
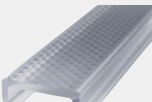
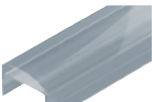
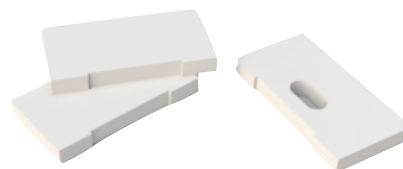


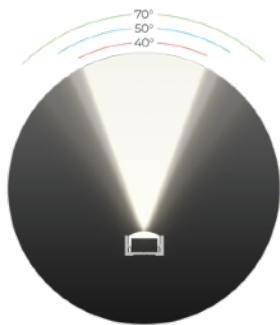
Profilo in alluminio anodizzato argento, bianco o nero in lunghezze a misura fino ad un massimo di 3 mt. Con differenti tipi di copertura come indicato in tabella. Disponibile con circuiti di diversa potenza nei colori bianco caldo (3000K), bianco natural (4000K) e bianco freddo (5700K).

- **Anche in versione dynamic white**
- **Dimmerabile da driver e smartphone**
- **Disponibile con dimmer touch a bordo**

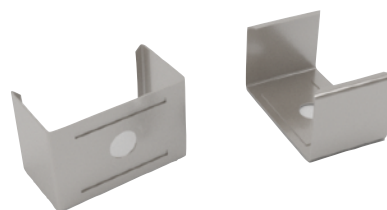
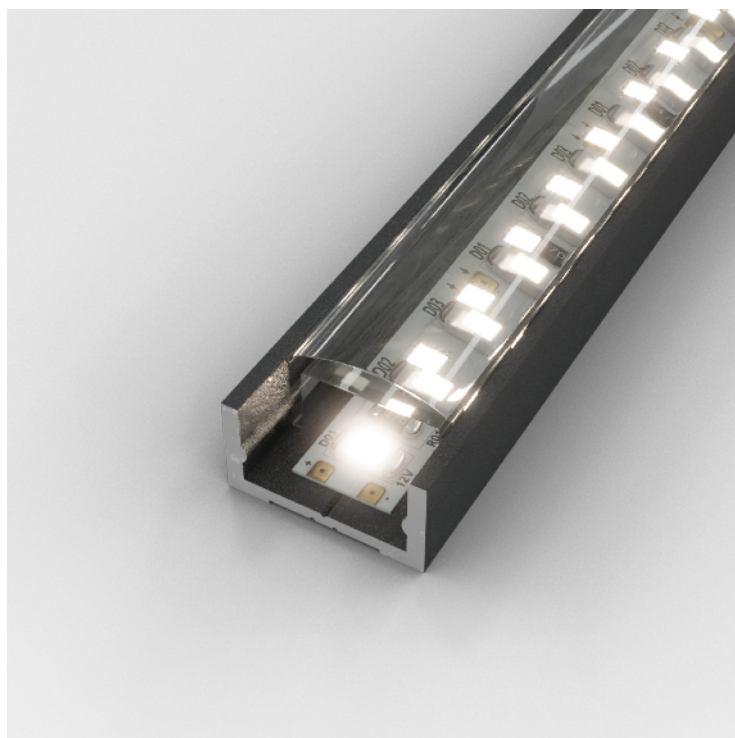
	CLC 10W/mt (3000K / 4000K)	CLC 20W/mt (3000K / 4000K)	CLC 2x20W/mt (3000K / 4000K)	ALS 17W/mt (3000K / 4000K / 5700K)	ALS 2x17W/mt (3000K / 4000K / 5700K)	
Profilo anodizzato grigio, lunghezza massima 3 mt	✓	✓		✓		
Profilo anodizzato bianco, lunghezza massima 3 mt	✓	✓		✓		
Profilo anodizzato nero, lunghezza massima 3 mt	✓	✓		✓		
Cover PMMA	Copertura in PMMA opalino					
Cover PMMA N	Copertura in PMMA nero					
Cover PT	Copertura prismata trasparente					
Cover LT	Copertura lenticolare trasparente					



Tappi di chiusura inclusi



Esempio di utilizzo con copertura
lenticolare trasparente



Staffe di fissaggio incluse